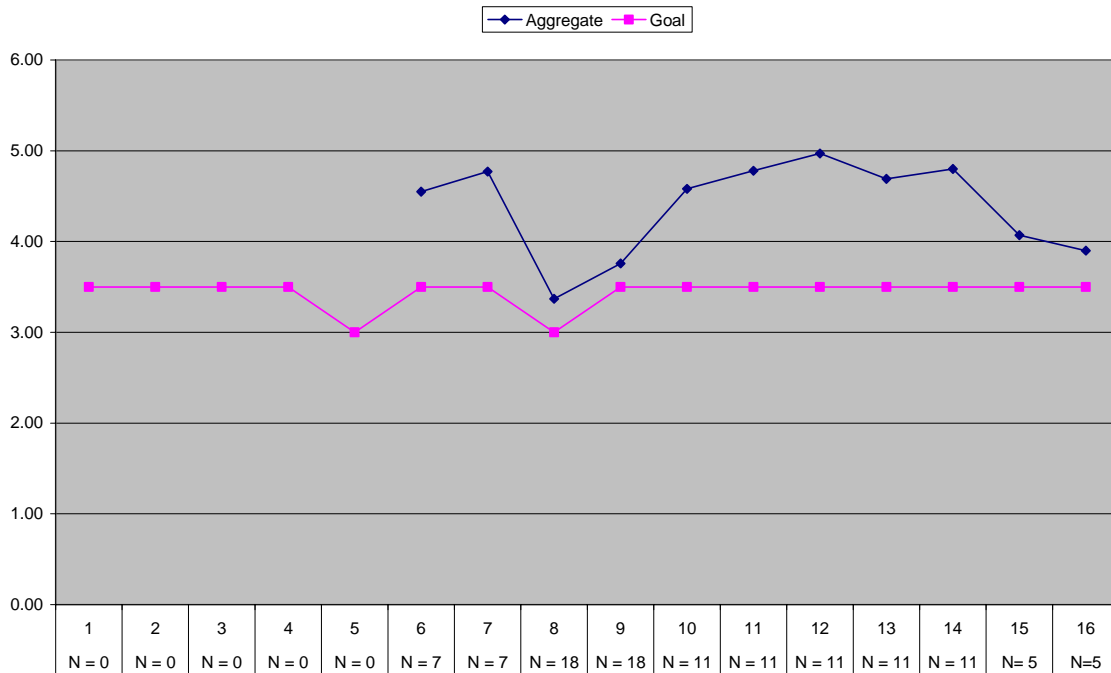


Forest Management
Overall Assessment Results for 2007-2008



No data was available for criteria 1-5.

Criterion Statements

1. *The aggregate score for each Program Outcome evaluated by graduates of the Forest Management program on a survey will be 3.5 or higher (on a 5-point scale), indicating the graduates' satisfaction with their Hocking College preparation for entry-level work.*
2. *The aggregate score for each Success Skill evaluated by graduates of the Forest Management program on a survey will be 3.5 or higher (on a 5-point scale), indicating the graduates' satisfaction with their Hocking College preparation in life/job skills.*
3. *The aggregate score for each Program Outcome evaluated by employers of Forest Management graduates on a survey will be 3.5 or higher (on a 5-point scale), indicating better-than-satisfactory to superior performance.*
4. *The aggregate score for each Success Skill evaluated by employers of Forest Management graduates on a survey will be 3.5 or higher (on a 5-point scale), indicating better-than-satisfactory to superior performance.*
5. *Of graduates who respond to a survey within one year after graduation, 60 percent will be employed in forestry or a related field or pursuing additional education.*
6. *The aggregate score for each Program Outcome evaluated by on-site practicum supervisors will be 3.5 or higher, indicating above average to excellent performance by Forest Management students.*

7. *The aggregate score for each Success Skill evaluated by on-site practicum supervisors will be 3.5 or higher, indicating above average to excellent performance by Forest Management students.*
- 8 and 9. *The aggregate score for each skill evaluated for students in performance testing in the course Focus on Forestry will be 3.0 or higher for first-year students and 3.5 or higher for second-year students (on a 5-point scale).*
10. *The aggregate score for each skill evaluated for research reports completed by Forest Management students for the Non-Timber Forest Resources project in the course Forest Management will be 3.5 or higher (on a 5-point scale), indicating more-than-adequate to superior performance.*
11. *The aggregate score for each skill evaluated for audio/visual presentations completed by Forest Management students for the Non-Timber Forest Resources project in the course Forest Management will be 3.5 or higher (on a 5-point scale), indicating more-than-adequate to superior performance.*
12. *The aggregate score for each skill evaluated by persons interviewed by Forest Management students gathering research for the Non-Timber Forest Resources project in the course Forest Management will be 3.5 (on a 5-point scale), indicating more-than-adequate to superior performance.*
13. *The aggregate score for each skill evaluated for forest management plans completed by Forest Management students in the course Forest Management will be 3.5 or higher (on a 5-point scale), indicating more-than-adequate to superior performance.*
14. *The aggregate score for each skill evaluated for audio/visual presentations completed by Forest Management students for the forest management plan project in the course Forest Management will be 3.5 or higher (on a 5-point scale), indicating more-than-adequate to superior performance.*
15. *The aggregate score for each Program Outcome evaluated by students of the Forest management program on the 6th Quarter Survey will be 3.5 or higher (on a 5-point scale), indicating student satisfaction with their Hocking College entry-level work..*
16. *The aggregate score for each Success Skill evaluated by students of the Forest management program on the 6th Quarter Survey will be 3.5 or higher (on a 5-point scale), indicating student satisfaction with Hocking College's preparation for life/job skills.*